



# CRUZIANA

GEOPARK NATURTEJO DA MESETA MERIDIONAL-EUROPEAN AND GLOBAL GEOPARK - RELATÓRIO MENSAL

**In this issue:** – Súbito introduces the new Geo-Wine in the Wines and Liqueurs Festival of S. Miguel d'Acha – Partnership with Tianzhushan Geopark results in an international project – Week of the Autochthonous Forest 2014 – TTransGeopark reduces its ecological footprint in Malcata...and more!



Olá/Hola/Ciao/Bonjour/Γειά σου/Hallo/God Dag/Salut/Zdravo/Hello/Ahoj/Helo/Helló/ Hei

## **Geo-histories of our places and people: Mosteiro**

Between the excavated valley of Sertã Stream (In this part is called Oleiros Stream) and the sterile uplands of the Red Mountain Mosteiro is located. The landscape is so diversified as the one provided by the schist mountains where the heather gives the shade, with steep slopes populated by pine trees and eucalyptus, the Sertã Stream is densely covered by the riparian, autochthonous vegetation and the tiny valleys, reason for the usage of diminutives for the villages name such as Chelinho, Videirinha, Cavalinho and Roquerinho, which are a pattern of vegetable gardens, orchards and olive groves of great silhouette and geometry. In an area with 17,17km<sup>2</sup> are distributed 307 inhabitants by the most nested villages, such as the fertile Vale do Souto, to higher places more exposed to the Winter harshness, such as Vale de Mós, in a sum of 10 villages and places. Not far of Oleiros, in a wide valley with plenty of water, following the main regional road extends itself Mosteiro. The Human presence in this region merges itself with the ancient landscape. In Vale de Mós appears some rock art in the mountains summits contemporary with the Tagus Valley and funerary monuments that once flagged some areas with its tumulus whitened by the quartz. In the Mesopotamian-like Vale do Souto, greater artery of good soils located between the meanders of Sertã and Escaldado streams, the Roman findings are frequent, presumably linked to an ancient villa. In a stream meander are located several "conheiras" that testify the mining activity in a water stream that brought the art of gold panning, even though occasional, almost to the present day. Also dated from the Roman age or later, are the findings in the surrounding area of the Mother Church of Mosteiro, among them a votive tombstone in marble, work piece that certainly was brought here from far away, due to the absence of marble in the region, which testifies this area past importance. In the first half of the 13th century may have been built here a monastery of the Order of Malta. Very little have left from this building in the next two centuries. The columns were taken to build the Mother Church of Oleiros, in the 16th century. The actual Mother Church of Nossa Senhora da Vitória keeps a small treasure, a stone-carved image dated from 1472.

In the parish north limit, shared with Oleiros, can be found what's left of a true treasure, an identified geo-mining heritage in Naturtejo Geopark assisted by UNESCO: the ancient tungsten mines of Fragas do Cavalo. These mines were found in 1910 by João Cardoso, a pharmacist of Cardigos. The two existent concessions shared with the neighbour parish of Oleiros, totally functioned in their apogee until 1920, having their history intersected with the great mines of Panasqueira. The labours resumed in 1939, with the "black gold fever" that swept the entire Beira Interior region. The labours developed alongside the great slope are still impressive, with numerous galleries vertically distanced in 20 meters with connection between them, and vertical chimneys spaced in 30 meters between them, intended for ventilation and the survey of the deposit between the two floors. The ore show up spread in the gangue or in wolframite bunches in two main veins, of low holding. The weakness of the underground was counterbalanced with the shoring in pine and rocks ripped from the earth inside, of great interest by the resourcefulness, which yet maintains the galleries unobstructed.



**Olá/Hola/Ciao/Bonjour/Γειά σου/Hallo/God Dag/Salut/Zdravo/Hello/Ahoj/Helo/Helló/ Hei**

On the other side of the ravine is located what's left of the mine washing process rooms and offices which, due to the chaos that followed the April Revolution, were burned and ransacked, but yet clearly show the importance of the mines and the techniques employed in their exploration. The majority of their workers were native from Mosteiro and the neighbour villages, young men and women who lived from occasional works and were low-skilled in farming, resin and mining. The labours stopped permanently in 1957, due to the fact that the insurance company refused to insure the workers because of the silicosis scourge. These mines have unique features in the Naturtejo Geopark context, being currently target of several scientific studies, which go from the local history to the biodiversity, well adapted to live in the metal-rich acidic waters that contaminate the Cavalo stream. What more can the local populations contribute to better understand the context of the Mines of Cavalo for an important page of Portugal contemporary history, which only recently began to be unveiled?

With possible background in the Malta monks due to the existence of the monastery, the irrigation of Vale do Souto is a remarkable work. The water canal that connects Mosteiro to Vale do Souto extends itself for several kilometres and may form the central theme of a hiking trail yet to be developed. Vale do Souto is a village of farming tradition with very specific characteristics in the Oleiros context. The local association ARCVASO energizes a number of activities that surpass by far the village dimension. The Harmovaso, Harmonica and Challenge Singing festival presents its long tradition. But there's no short of hosting hiking and MTB activities. The agro-touristic aptitude of the sunny valley facing west is yet to be explored. These are the meanders of the Sertã stream and the small waterfalls of Ribeira do Escaldado, with its thick riparian galleries, the "conheiras" and other Roman traces. Yet there are the architecture and the traditional technologies. A heritage which, though not being monumental, it's outlandishly diversified. In Mosteiro, throughout the Ribeira da Sertã valley, the trout can be a gastronomic reference as well as the Callum wine, that "thrilling anthropological treasure" unique in this region, in risk of being lost forever as well as all the productive system that may go back to the Order of Malta presence in the region. The Mosteiro Maltese Group is in these lands the responsible for the cultural enhancement that comes from the Traditional Soups Show, to a wide number of different hiking trails. To the north of the parish, the tours through the mountain can unveil the chalcolithic traces and this true relic of a crucial time in the world history that is the Mines of Cavalo. Despite the ruin that quickly rose, the space between Celadinha and Coval Seixoso and between Ribeira do Cavalo and the upland with the same name, has a great potential for a theme park that no one came to create in Portugal before, dedicated to the tungsten memory and what it brought to the society and the economy in Portugal, since the Second World War until the present days.

#### References

- Caninas, J.C., Sabrosa, A., Henriques, F., Monteiro, J.L., Carvalho, E., Batista, A., Chambino, M., Henriques, F.R., Monteiro, M., Canha, A., Carvalho, L. & Germano, A. 2008. Tombs and rock carvings in the Serra Vermelha and Serra de Alvélos (Oleiros-Castelo Branco). In Graphical Markers and Megalith Builders in the International Tagus, Iberian Peninsula, (ed.) P. Bueno-Ramírez, R. Barroso-Bermejo & R. Balbín-Berhmann. British Archaeological Reports, BAR International, series 1765, Oxford, 89-102.



Olá/Hola/Ciao/Bonjour/Γειά σου/Hallo/God Dag/Salut/Zdravo/Hello/Ahoj/Helo/Helló/ Hei

- Caninas, J.C., Sabrosa, A., Henriques, F., Germano, A., Monteiro, J.L., Carvalho, E., Batista, A., Canha, A. & Chambino, M. 2011. Tumulus de Vale de Mós 1 (Serra Vermelha, Oleiros). Açafa On-line, 4, 51pp.
- Dias Diogo, A.M. & Dias, J.L. 2000. Estudo de achados romanos no Vale do Souto, concelho de Oleiros. Câmara Municipal de Oleiros.
- Neto de Carvalho, C. & Rodrigues, J. 2012. Viagem à alvorada da Vida nas minas das Fragas do Cavalo (Oleiros). Açafa Online, 5: 251-271.
- Neto de Carvalho, C.; Gouveia, J.; Chambino, E. & Moreira, S. 2006. Geomining heritage in the Naturtejo area: inventory and tourist promotion. Actas do 3º Simpósio sobre Mineração e Metalúrgia Históricas no Sudoeste Europeu, Porto: 595-606.
- Neto de Carvalho, C., Rodrigues, J. & Chambino, E. 2012. Tempos de Volfrâmio em Oleiros. Naturtejo, EIM/Câmara Municipal de Oleiros, 16 pp.
- Neto de Carvalho, C., Rodrigues, J.C. & Gonçalves, D. 2013. Património Geológico de Oleiros: inventário de geossítios e propostas para a sua valorização. Açafa On-line, 6, 4-61.
- Pimentel, J.M.P.A. 1881. Memórias da Villa de Oleiros e do seu concelho. Typographia da Virgem Immaculada, Angra do Heroísmo, 358pp.
- Rodrigues, J.C., Neto de Carvalho, C. & Chambino, E. 2011. "Há Ouro na Foz!" e outras actividades de divulgação do património geomineiro do Geopark Naturtejo. In: Batata, C. (ed.), Actas do VI Simpósio sobre Mineração e Metalurgia Históricas no Sudoeste Europeu. Vila Velha de Ródão: 263-283.

The Editor  
Carlos Neto de Carvalho  
Scientific Coordinator  
Geologist

Frontpage: (Projecto Objectiva: Geopark)

# ACTIVITIES OF THE MONTH



**8 November – Identity Hill: Talks with S. Martinho.** The association LUPA of Castelo Branco, Urban Laboratory for Arts, promoted a stroll to S. Martinho Hill, in Castelo Branco, with the aim to promote a moment of dialogue between all the participants, providing the sharing of knowledge, experiences and memories about the place. Were addressed some subjects such as: archaeology, history, religion, anthropology, literature and geology. Manuela Catana was invited to address geology and to introduce Naturtejo Geopark. This activity had 15 participants.

**8 to 9 November – TTransGeopark reduces its ecological footprint in Malcata.** After the TTransGeopark take place with great success in late April it's time to put back in the Nature a little of the impact that this all-terrain activity had in the environment. The April participants came back to Naturtejo Geopark with the Geo Guest-house "Casa do Forno", supported by the Malcata Mountain Natural Reserve, to plant 50 autochthonous trees that will reduce the carbon emissions made by the fuel burning that happened during this environmental awareness event. Although the cold and rainy days, The participants not only had the opportunity to learn with the Natural Reserve technicians but also visited the trout breeding grounds of Trutalcoa and participated in the big traditional "magusto" (a campfire with roasted chestnuts) in the village of Fóios, already in Sabugal. After the usual, but long waited feast held in "Casa do Forno", in Salvaterra do Extremo, they took the next day to know the rich history and monuments of this border village.



**9 to 14 November – Partnership with Tianzhusan Geopark renews the interpretation of exceptional Geological Heritage**

## **9 to 14 November – Partnership with Tianzhushan Geopark renews the interpretation of exceptional Geological Heritage.**

An international project coordinated by the China University of Geosciences in Beijing is being developed by Tianzhushan Global Geopark. The aim of the project is to refresh the interpretation of the remarkable geological heritage of Tianzhushan; its Palaeocene fossil sites, the amazing areas of picturesque granite landforms, and the educational ultrahigh-pressure metamorphism routes. It also includes improving signage, local museums and cultural sites, visitor centres, local schools and family-run hotels. The Tianzhushan Project involves the innovative design of about 150 information panels, geo-educational exhibitions, mascots, a website and merchandising, the training of tour guides, editing popular science texts, the production of a new promotional video and the design of a new geopark guidebook, leaflets and a tourist map in five different languages to cater for international visitors to Tianzhushan Geopark.

An internationally renowned team of experts is taking part in this project to guarantee the quality of the scientific information for the educational provision for the general public and schools. The team includes geologists, e.g. Professor Kuiyuan Tao from the Nanjing Institute of Geology and Minerals, geomorphologists, e.g. professors Zhiju Cui and Youyu Xie from Peking University and the China Academy of Science respectively, experts in geotourism such as Dr. Kejian Xu from China University of Geosciences and Carlos Neto de Carvalho from Naturtejo Global Geopark, Portugal, and Zhihua Li, the senior editor of Chinese National Geographic. The quality of translations in foreign languages is supervised by Dr. Joseph Finch from the University of Bath in England and Professor Bangli Liu from Zhengzhou University. The involvement of experts in tourism management and planning, graphic and cartoon design, park design, art layout, video and photography exemplifies the project's commitment to best practice.

Naturtejo Global Geopark was invited to take part in the project under the official cooperation agreement signed last July. This sister partnership fosters an active exchange of experiences in the technical fields of management, tourism and business relationship. Carlos Neto de Carvalho, scientific coordinator of the Portuguese Geopark, was invited to contribute to the group of experts that visited and worked in the territory for one week under the coordination of Guosheng Yu, manager of Tianzhushan Global Geopark. The working group also involved the Geopark's staff and board of directors in discussions with the local inhabitants and businessmen responsible for the scenic areas and museums, cultural sites, local schools and eco-farms, family-run hotels and restaurants, local gift shops and tourism companies.

The multidisciplinary team will work intensively in the field and in their respective institutions in China and Europe for the next six months.



## **14 November – Presentation of the Strategic Plan of the Oleiros Municipality for 2014-**

**2020.** The second introduction debate for the de Strategic Plan of the Oleiros Municipality took place promoted by the Municipality of Oleiros and the SPI – Portuguese Society for Innovation, which is supporting and advising. The Plan integrates the geomonument appreciation, the development of the Great Trail of Muradal – Pangeia, part of the International Appalachian Trail, being Naturtejo Geopark a strategic partner in the scope of the Integrated Action for Touristic Development. In this debate attended representatives from several entities of the territory, namely the Naturtejo Geopark represented by Joana Rodrigues. This Plan is being developed under the framework of the Europe Strategy 2020 and framed in the outlined model by the Portugal 2020 and by the European Union, through the Common Strategic Framework 2014-2020.



### **15 and 16 November – Súbito introduces the new Geo-Wine in the Wines and Liqueurs Festival of S. Miguel d'Acha .**

From an implanted vineyard in the village of São Miguel de Acha, in mid Naturtejo Geopark territory, was born the Geo Wine Súbito that, in the fifth Wines and Liquors Festival, released the new single vine variety Touriga Nacional, an excellent red of deep garnet colour with flavour of red fruits and a slight floral touch. The new variety was introduced now in Portugal, tough with the support of the Idanha-a-Nova Municipality already made an impact in international events held in Paris and Madrid, in the past month. At the release in the Spanish capital was even tasted and praised by the Minister for Agriculture, Assunção Cristas, during one of the biggest international fairs dedicated to de fruit and vegetable sector. Produced by the agricultural society Viniregra, managed by Nuno Nunes, the Geo Wine Súbito is an example that the projects has economic success when their good and may translate to the creation of wealth and employment. At the festival, another wine joined the Súbito family: the White Chardonnay/Syrah 2013 promises to delight the lovers.

The 5th Wines and Liqueurs Festival, in São Miguel de Acha, was the destination to lots of people, who took the weekend to taste the best regional nectars, enjoy a diversified entertainment program and to walk in family. Accompanying the wines and liqueurs were exhibitors from the most diversified products from the Idanha-a-Nova Municipality and the Beira Baixa region, lands of excellency. Cheese, olive oil, cakes, traditional blood meats, jams, honey and bread were another flavours participating in this effort to "maximize the appreciation of the traditional products, foster the local economy and promote this territory as a touristic destination", explained the Mayor of the Idanha-a-Nova Municipality and Naturtejo, Armindo Jacinto.

The fair was a joint organization between the Municipality of Idanha-a-Nova and the Parish of São Miguel de Acha, giving continuity to Naturtejo Geopark strategy "of supporting and disclosing the local producers in themed fairs, motivating them so they can be successful in their activity", stressed Armindo Jacinto.

The wines and liqueurs production, in particular, is a tradition in São Miguel de Acha which, in this festival edition, has shown once again successful cases. During the weekend the village was the stage for the releasing of the liqueurs brand Acha Doce and the single variety wine Touriga Nacional from the Geo Wine Súbito, two projects born in the parish that grew and gained sustainability in the events promoted by the municipality.

For the Mayor of Idanha-a-Nova Municipality, the two companies "showed that it is possible to succeed when the projects are good and they can turn into wealth and employment, thus they represent well what we want for the future of the municipality ". Also the Mayor of the São Miguel D'Acha Parish, Maria de Jesus Nogueira, "praised the participation of the exhibitors of that parish, giving credit to the producers who introduced new brands and products".

One of the most attended moments was the 5th Wines and Liqueurs contest, held by the Superior Management School of Idanha-a-Nova. Also the biggest "Sangria" (wine with fruits and sugar) of Portugal was prepared in this festival, with a 60 litres record.

The fifth Wines and Liqueurs Festival counted yet with the participation of around one hundred exhibitors, coming mostly from municipalities under the Beira Baixa Intermunicipal Community. For that reason, the Wines and Liqueurs Festival goes towards the guiding lines of Provere Beira Baixa, Economical Valuation Program for Endogenous Resources, thus allowing conjugating the territory appreciation and its products, boosting quality, singularity and diversity. The presentation and tasting of the liqueurs brand Acha Doce (previously named Doce Pinga), on the Saturday afternoon, was one of the top moments of the 5th Wines and Liqueurs Festival.

Made by handmade techniques in São Miguel de Acha, the liqueurs conquered all who tasted its classic or new flavours, from the chocolate to different fruits and spices. The producer history, Ana Paula Carvalho, is an example of this festival success. Born in Lisbon but residing in São Miguel de Acha for 14 years, have been participating for three years now with her first liqueurs. "It started as a joke, in an occasion where her parents decided to sell some products to earn some money for their children finalists' trip, and from there I acquired the taste for making liqueurs ". The experience was a success. At the time a public servant, Ana Paula Carvalho then asked the rescission to commit herself to the liqueurs production", which nowadays sweeten countless mouths in the municipalities and regional festivals. "The Acha Doce could not exist if it weren't the festivals promoted by the Municipality of Idanha-a-Nova, since they are the reason that gives us spirit to grow and the needed sustainability for us to keep on investing", explains the producer. Nowadays are more than 30 the flavours put in the market, all 100% natural and several with regional products.



**17, 18, 20, 21, 23 and 26 November – “Week of the Autochthonous Forest 2014 – Idanha-a-Nova”.** The Movement “Plantar Portugal” promoted the 5th Edition of the “Week of the National Reforestation”, an initiative held every year at the time of the celebrations for the Day of the Autochthonous Forest. The Municipality of Idanha-a-Nova joined this initiative hosting the “Week of the Autochthonous Forest 2014 – Idanha-a-Nova” together with Naturtejo Geopark. The Educational Activity Services, Green Spaces and the Municipality forest technician arranged in partnership a schedule for the initiatives. In those, took part 330 students and teachers of all the Educational Institutions from the town of Idanha-a-Nova and 22 volunteers. It were sown and planted autochthonous species in Tapada do Sobral, in Monte Trigo, in the Municipal Nursery, in the Superior Management School of Idanha-a-Nova and in the Basic School and Kindergarten of Idanha-a-Nova. The plants used were the Holm-oaks (*Quercus ilex*), Cork-oaks (*Quercus suber*), Portuguese oak (*Quercus pyrenaica*), Myrtles (*Myrtus communis*), Strawberry trees (*Arbutus unedo*) and European nettle trees (*Celtis australis*). During this initiative were planted and sown a total of 1350 autochthonous plants. The monitors were Hugo Oliveira and Manuela Catana together with technicians from the Educational Activity Services and the Green Spaces Service from the Idanha-a-Nova Municipality.





**28 November – Discovery of an important archaeological station is a promise to the contribution for the Portuguese Palaeolithic knowledge.**

In the scope for the enlargement of the industrial facilities of AMS in Vila Velha de Ródão, the Tagus Studies Association made an important archaeological finding. The coluvionar deposits that extend themselves in the vicinity of the ancient copper mines of Ingadanais, offer thousands of lithic artefacts, in a very restricted area, which were dated from the Mousterian era. This true open-air workshop was excavated in emergency by a large team of archaeologists who proposed to rescue the total amount of traces in an area that will be fully destroyed. From this point will certainly result in a very important contribute to the knowledge of the Mid Palaeolithic in Portugal, testifying once again the importance of the Naturtejo Geopark territory for the history of the Human occupation in the country, whit more than 1500 archaeological sites identified until now.

**30 November – Fam Trip comes through the Orvalho village.**

Club Fiat brought around 80 employees to spend the weekend in the mountains of Oleiros and to know its natural and cultural legacies, one of the most original and diversified from the Naturtejo Geopark. In the village of Orvalho, João Geraldes from the company Casa do Forno introduced Naturtejo Geopark, described the geological heritage of Oleiros and took the employees of this well-known international automobile brand to the astonishing geomorphological viewpoint of Cabeço Mosqueiro, where he interpreted the landscape to a interested party.



# IMPACT OF GEOPARK IN MEDIA

## Newspaper & www

November (Oleiros Magazine) – 2nd Landgeosites Trail – trip gathers 30 vehicles

4 November ([www.dailymail.co.uk/travel/travel\\_news/](http://www.dailymail.co.uk/travel/travel_news/)) – The amazing medieval Portuguese village constructed under and around gigantic granitic boulders with 200 tons

4 November (Povo da Beira) – Touristic operators in Naturtejo Geopark

5 November (Gazeta do Interior) – Naturtejo Geopark receives German touristic operators

6 November (Reconquista) – German operators visit the territory

12 November (Reconquista) – São Miguel d'Acha: Wines and liqueurs entertain the village

12 November (Gazeta do Interior) – S. Miguel de Acha receives Wines and Liqueurs Festival

15 November (Revista do Expresso) – Griffon vultures and Trilobites

18 November (Povo da Beira) – Municipality promotes Week of the Autochthonous Forest in partnership with Naturtejo Geopark

20 November (Reconquista) – The Festival of the thousand and one liqueurs

25 November (Povo da Beira) – GR38 is almost concluded

25 November (Povo da Beira) – Súbito introduces new GeoWine

26 November (Gazeta do Interior) – Out of Place Festival starts Friday

27 November (Reconquista) – Out of Place returns



## PROMOTION FOR THE GENERAL PUBLIC

- Callum Wine Oleiros "An thrilling historical wine" (brochure in Portuguese language)





## PROMOTION FOR THE GENERAL PUBLIC

naturtejo GEO.PARK

Geoparks

GLOBAL GEOGRAPHICAL NETWORK

Boas Festas

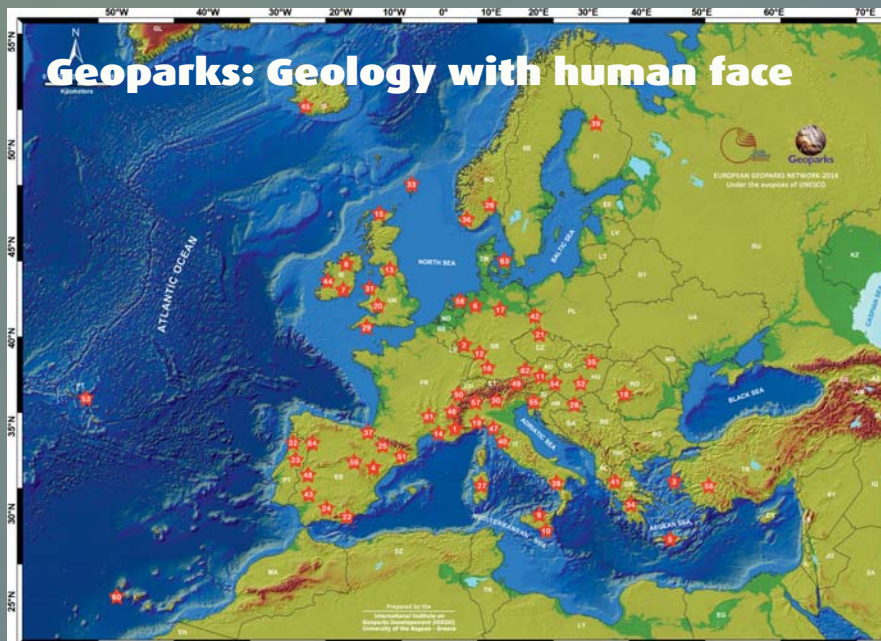
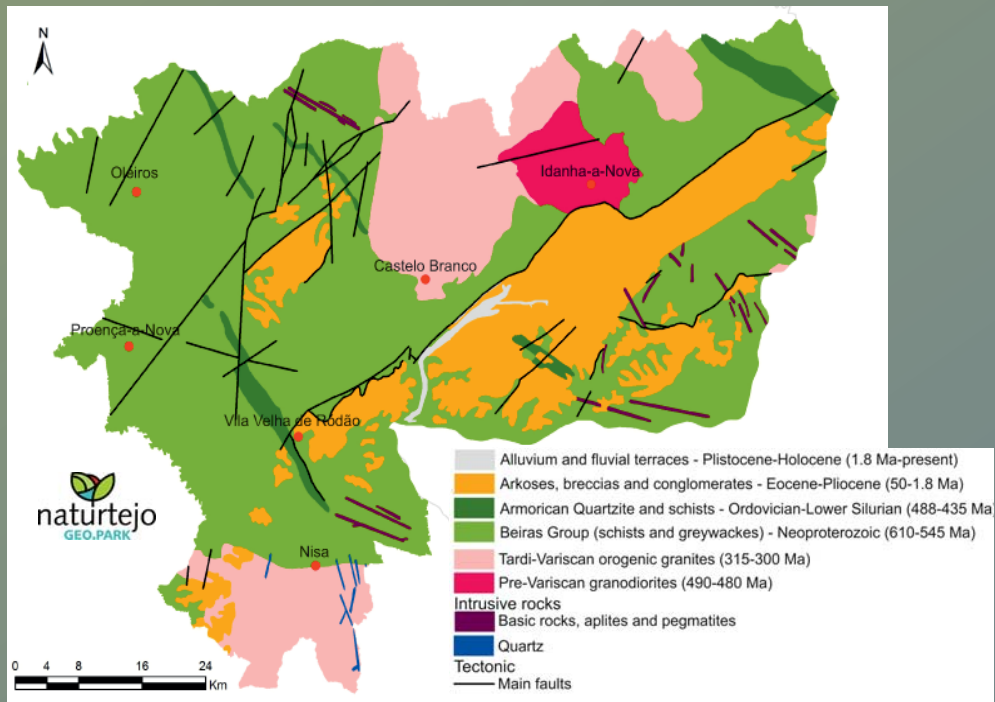
2014

Merry Christmas  
سامسرک یری م  
Joyeux Noël  
Frohe Weihnachten

メリークリスマス  
Sretan Božić  
Buon Natale

Feliz Navidad  
God Jul  
메리 크리스마스

Καλά Χριστούγεννα  
счастливого Рождества  
मेरी क्रसिमस  
Wesołych Świąt



**CRUZIANA**

GEOPARK NATURTEJO DA MESETA MERIDIONAL-EUROPEIA E GLOBAL GEOPARK MONTHLY REPORT

[www.geoparknaturtejo.com](http://www.geoparknaturtejo.com)